

kuraray

Noritake

DENTAL LIGHT-CURED RESTORATIVE COMPOSITE

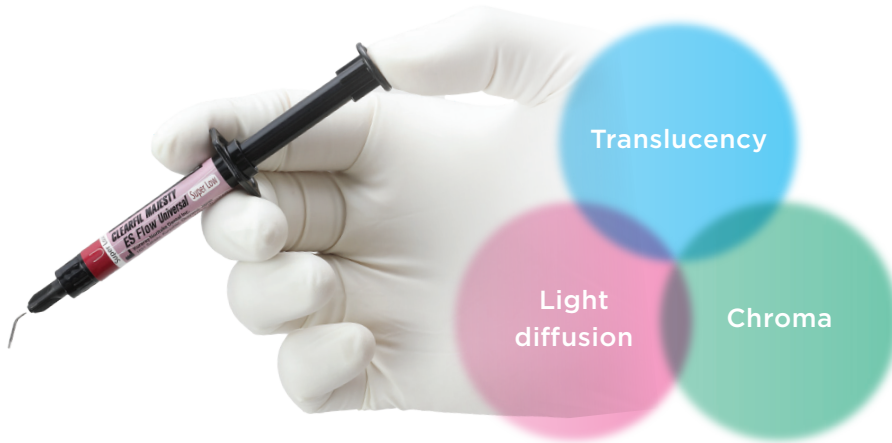
CLEARFIL MAJESTY™ ES Flow Universal



CLEARFIL MAJESTY™ ES Flow Universal

CLEARFIL MAJESTY™ ES Flow Universal is high viscosity flowable composite (super low flow), 78 wt/%, filled flowable composite with physical properties equivalent to conventional paste type composite resins. With its unique “LIGHT-DIFFUSION” filler matrix, one universal shade covers* 16 VITA shades** & provides easy polishing with a long-lasting gloss finish.

* Class I, II cavities | ** VITA is a trademark of VITA Zahnfabrik, Bad Sackingen, Germany



Natural blending

Universal shades are designed to focus on the translucency of the enamel and chroma of dentin.

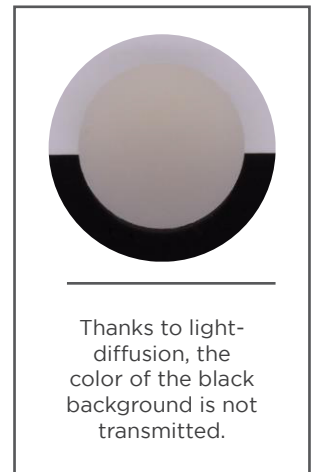
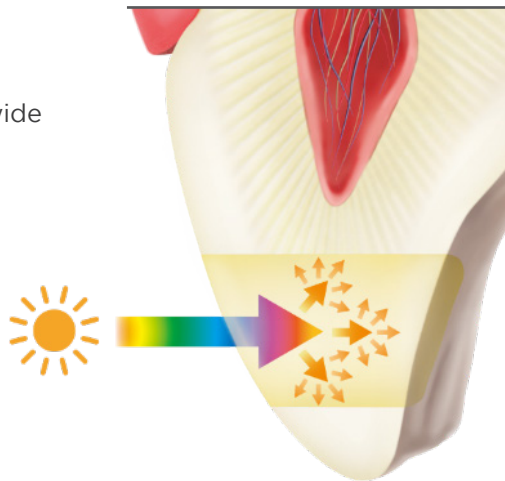
The light-diffusion effect of the dentin is focused to mimic natural teeth.

The magic of light-diffusion

Optical characteristics and wide shade blending.

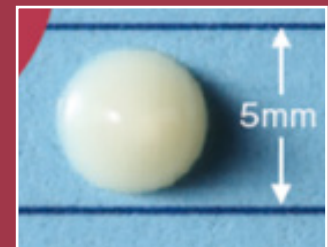
Light-Diffusion Technology (LDT) makes restorations diffuse light in a similar way to the tooth structure.

As a consequence, the material integrates easily and smoothly into the surrounding tooth structure.



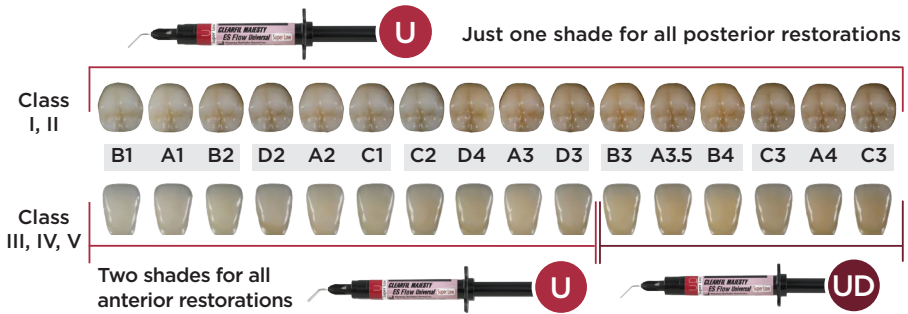
Super low adapts to your needs

With its “high viscosity”, the tooth shape can be retained making it suitable for building up molar cusps & ridges.



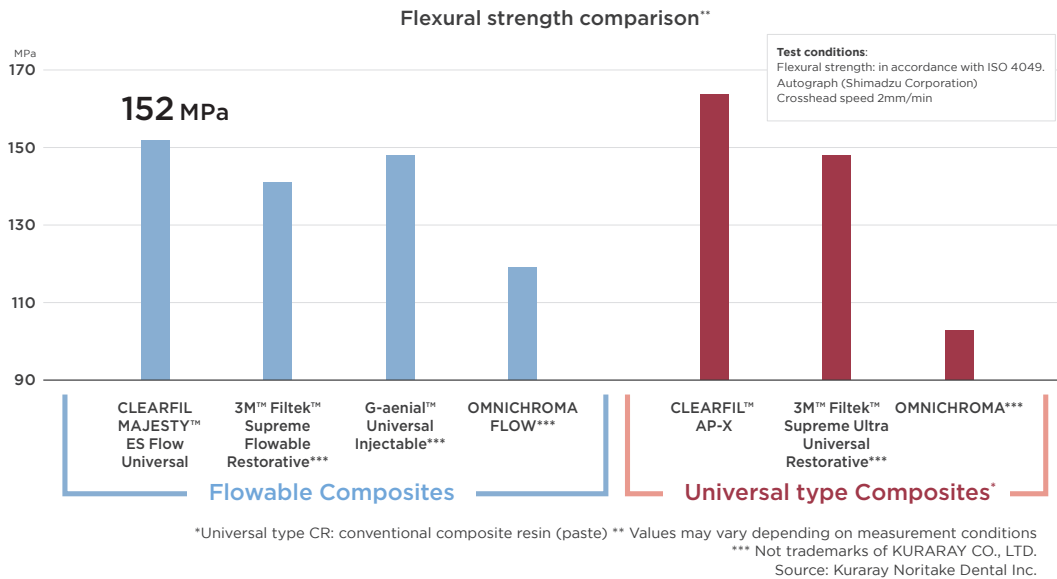
*Paste consistency 1 min. after dispensing horizontal and vertical.

Color matching with anterior and posterior restorations



Superior physical properties

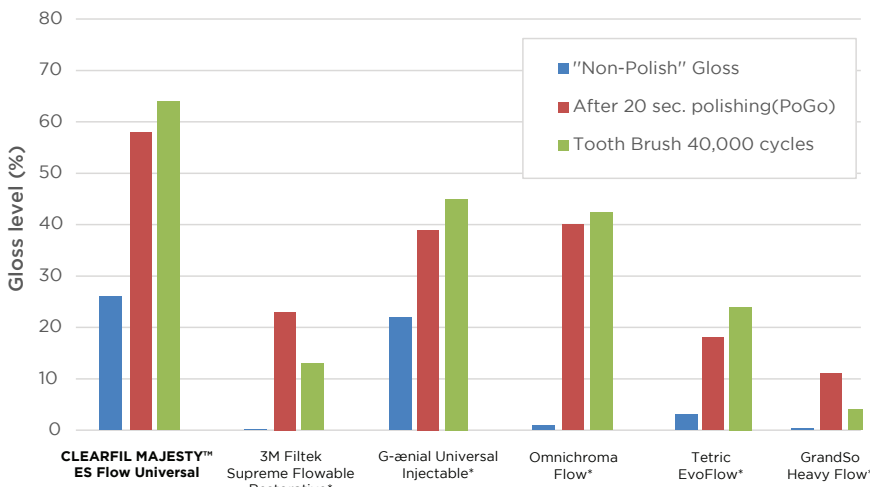
CLEARFIL MAJESTY™ ES Flow Universal (Super Low) has high physical properties due to its high filler loading (78 wt/%).



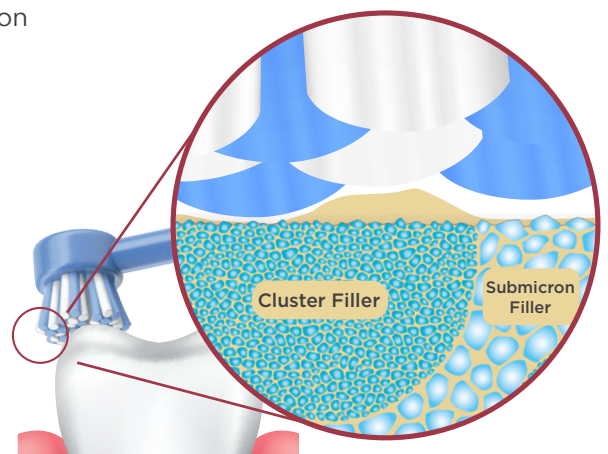
Easy polishing and long-lasting gloss

CLEARFIL MAJESTY™ ES Flow Universal's unique cluster and submicron fillers provide easy polishing & long-lasting gloss finish.

Test conditions: Specimen ø10 mm, thickness 2 mm. Surface roughened with #600 water-resistant abrasive paper. Gloss level of all the materials was measured below the conditions: Non-polish: After ethanol wiping. Polishing: Polished with composite resin finishing points PoGo (Dentsply Sirona) at 5000 rpm. Toothbrush wear: 40,000 strokes were worn by the toothbrush at a load of 250 g, 30 strokes/minute, and 10 wt% toothpaste.



Values may vary depending on measurement conditions. Source: Kuraray Noritake Dental Inc.
*Not trademarks of KURARAY CO., LTD.



The use of a filler with a small particle size prevents the formation of large irregularities on the surface of the cured product after toothbrush abrasion and is expected to maintain a smooth surface.

Direct restoration with CLEARFIL MAJESTY™ ES Flow Universal



Comparison table with flowable composite resins

	CLEARFIL MAJESTY ES Flow Universal	3M™ Filtek™ Supreme Flowable Restorative*	G-aenial™ Universal Injectable*	Beautiful Flow Plus X F00*	Omnichroma Flow*	Tetric EvoFlow®*	GrandioSo HeavyFlow*
Manufacturer	Kuraray Noritake Dental	3M	GC	SHOFU	Tokuyama	Ivoclar	VOCO
Universal Shades	U, UD	12 shades	16 shades	15 shades	2 shades Regular, Blocker	14 shades	13 shades
Light Diffusion	Yes	No	No	Yes	No	No	No
Flexural Strength/MPa	152	141	148	112	119	90	138

*Not trademarks of KURARAY CO., LTD.

Ordering Information



#4620-KA
Super Low (U) Syringe
Syringe 2.7g/1.5mL
15x Needle Tips



#4621-KA
Super Low (UD) Syringe
Syringe 2.7g/1.5mL
15x Needle Tips



#3331-KA
20x Needle Tip (N)

YOUR CONTACT

Kuraray America, Inc.
32 Old Slip Phone (800) 879-1676
Floor 7 Fax (888) 700-5200
New York, NY 10005 E-mail info@kuraraydental.com
Website www.kuraraydental.com

- Before using this product, be sure to read the Instructions for Use supplied with the product.
- The specifications and appearance of the product are subject to change without notice.
- Printed color can be slightly different from actual color.

*"CLEARFIL" and "CLEARFIL MAJESTY" are registered trademarks or trademarks of KURARAY CO., LTD.



Kuraray Noritake Dental Inc.

2-28, Kurashikicho, Tainai, Niigata, 959-2653, Japan

R Only

